



Western Court, Rosebank Way, W3

A recently fully refurbished ground floor three-bedroom apartment situated in the Western Court development on Rosebank Way.

The flat also comprises of a separate fully fitted kitchen, family bathroom and a reception room. It also benefits from access to communal gardens.

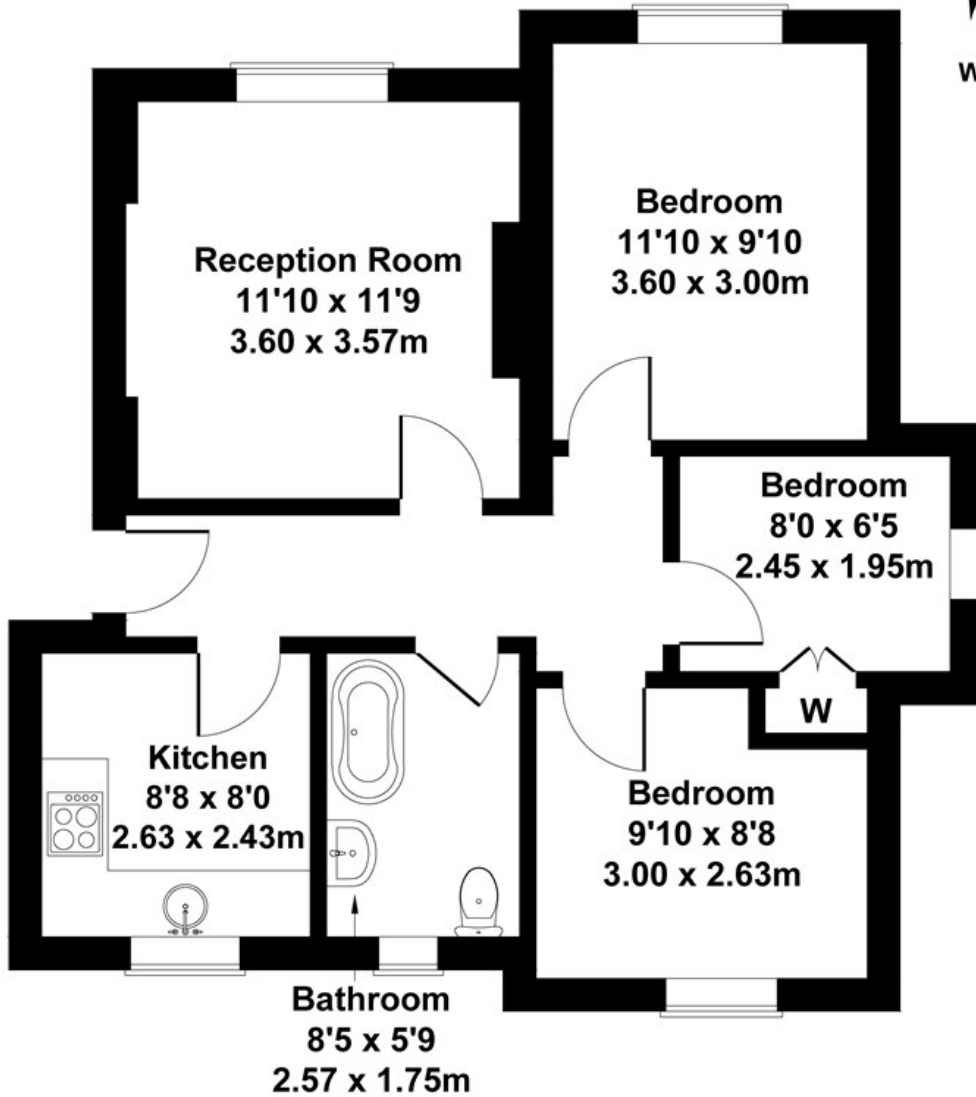
The property is offered to the market with no chain.

- Three bedrooms
- Ground floor
- No chain
- Recently fully refurbished
- Communal Gardens
- Great transport and motorist links nearby
- CPZ Parking
- Ofsted outstanding schools nearby

£410,000

Western Court

Approximate Gross Internal Area
614 sq ft - 57 sq m



GROUND FLOOR

Not to Scale. Produced by The Plan Portal 2023
For Illustrative Purposes Only.

| Energy Efficiency Rating | | |
|---|----------------------------|-----------|
| | Current | Potential |
| Very energy efficient - lower running costs | | |
| (92 plus) A | | |
| (81-91) B | | |
| (69-80) C | | |
| (55-68) D | | |
| (39-54) E | | |
| (21-38) F | | |
| (1-20) G | | |
| Not energy efficient - higher running costs | | |
| England & Wales | EU Directive 2002/91/EC | |