



Western Court, Rosebank Way, W3

A recently fully refurbished ground floor three-bedroom apartment situated in the Western Court development on Rosebank Way.

The flat also comprises of a separate fully fitted kitchen, family bathroom and a reception room. It also benefits from access to communal gardens.

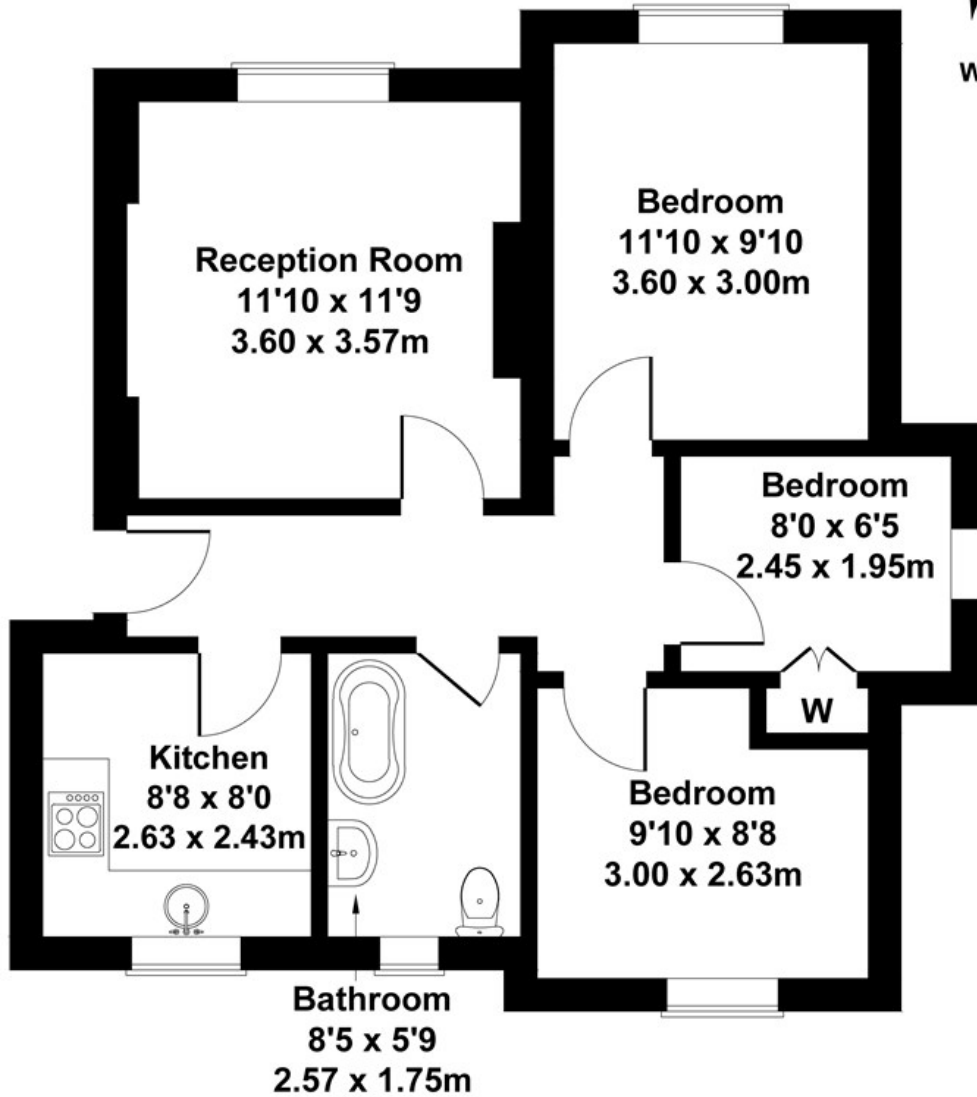
The property is offered to the market with no chain.

- Three bedrooms
- Ground floor
- No chain
- Recently fully refurbished
- Communal Gardens
- Great transport and motorist links nearby
- CPZ Parking
- Ofsted outstanding schools nearby

£410,000

Western Court

Approximate Gross Internal Area
614 sq ft - 57 sq m



GROUND FLOOR

Not to Scale. Produced by The Plan Portal 2023
For Illustrative Purposes Only.

Energy Efficiency Rating		
	Current	Potential
Very energy efficient - lower running costs		
(92 plus) A		
(81-91) B		
(69-80) C		
(55-68) D		
(39-54) E		
(21-38) F		
(1-20) G		
Not energy efficient - higher running costs		
England & Wales	EU Directive 2002/91/EC	