



Gilbert Court, W5

Situated on the first floor of this much sought-after purpose-built development located in the heart of Ealing, this large two-bedroom property has been beautifully refurbished by its current owners and enjoys amazing panoramic views across the Ealing skyline.

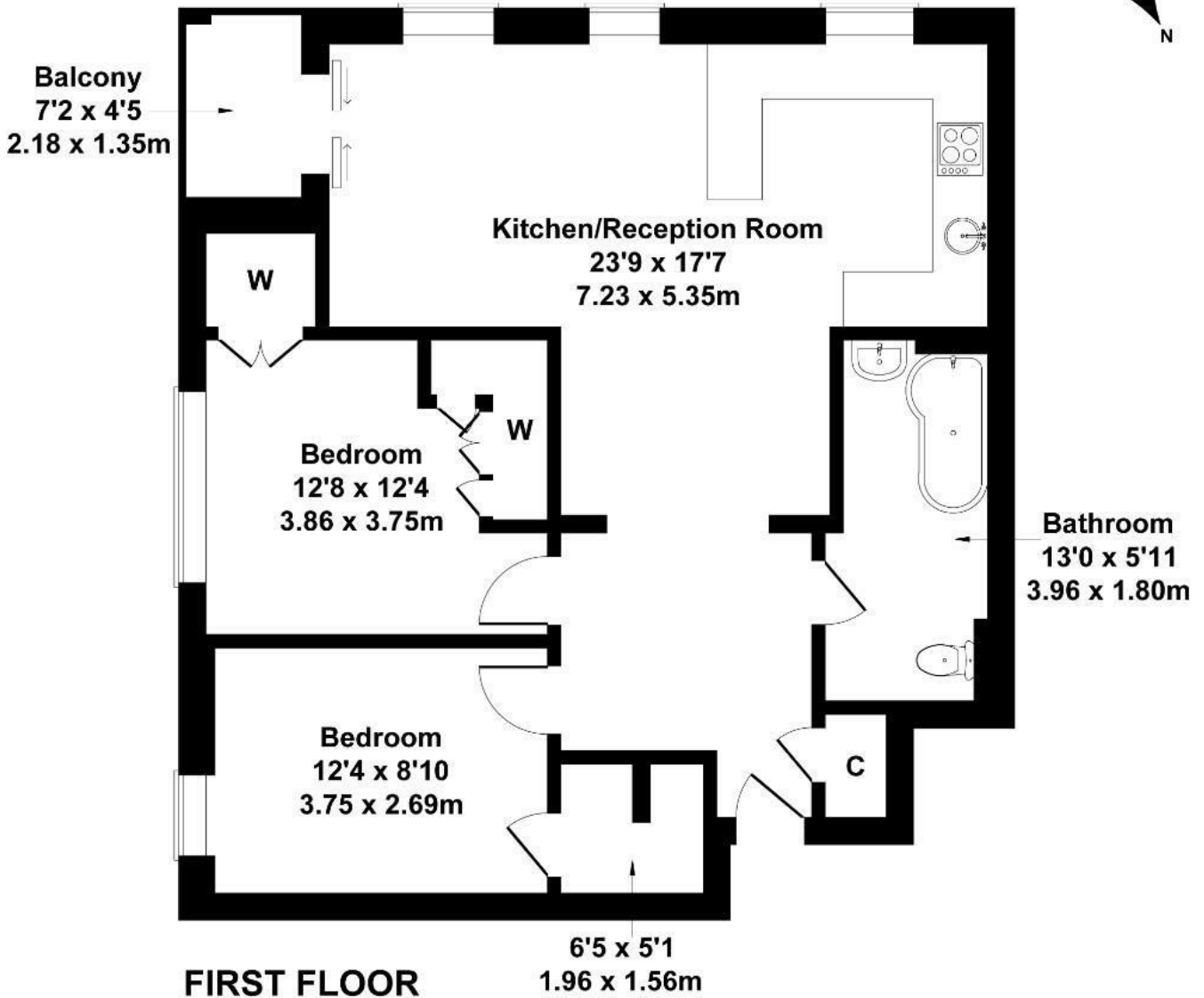
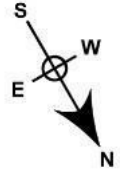
The apartment consists of two double bedrooms, a contemporary open-plan kitchen/reception room, a large family bathroom and allocated garage. It also benefits from access to a private balcony.

- Two double bedrooms
- Large open plan kitchen/reception
- Immaculate condition
- First floor
- Balcony
- Stunning views
- Lift access
- Allocated garage
- Well-groomed communal gardens
- Close to multiple transports links (North Ealing and Ealing Broadway)

£525,000

Gilbert Court

Approximate Gross Internal Area
797 sq ft - 74 sq m



Not to Scale. Produced by The Plan Portal 2024
For Illustrative Purposes Only.

Energy Efficiency Rating		Current	Potential
Very energy efficient - lower running costs			
(92 plus) A			
(81-91) B			
(69-80) C		71	84
(55-68) D			
(39-54) E			
(21-38) F			
(1-20) G			
Not energy efficient - higher running costs			
England & Wales		EU Directive 2002/91/EC	