



Heathfield Road, Acton

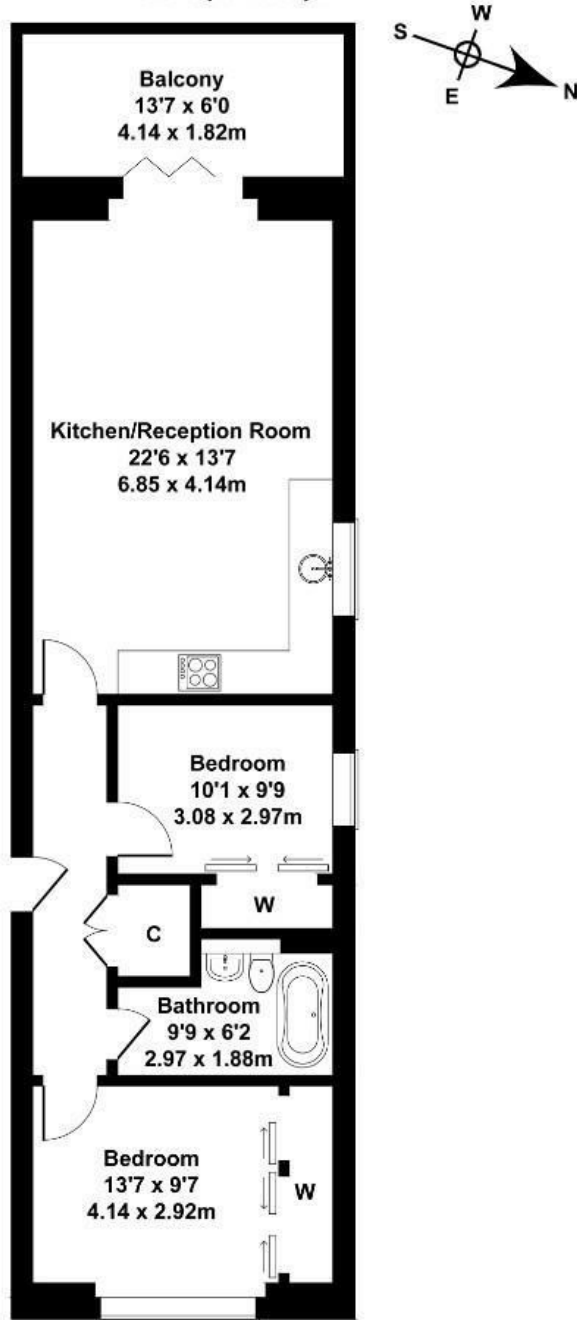
A stunning two-bedroom ground floor apartment in an exclusive development in an imposing Victorian building. Converted in 2019, the property consists of two double bedrooms, luxury family bathroom, large open plan reception leading out onto a west-facing terrace. The property comes in turnkey condition.

- Two double bedrooms
- Ground floor
- Large west facing terrace
- Long lease
- Short walk to Acton Town tube station
- Stunning finish throughout
- Mill Hill conservation area
- Built in 2019
- High ceilings throughout
- Luxury bathroom

£599,950

Heathfield Road

Approximate Gross Internal Area
678 sq ft - 63 sq m



GROUND FLOOR

Not to Scale. Produced by The Plan Portal 2024
For Illustrative Purposes Only.

Energy Efficiency Rating		
	Current	Potential
<i>Very energy efficient - lower running costs</i>		
(92 plus) A		
(81-91) B		
(69-80) C	76	76
(55-68) D		
(39-54) E		
(21-38) F		
(1-20) G		
<i>Not energy efficient - higher running costs</i>		
England & Wales	EU Directive 2002/91/EC 