



Eaton Rise, W5

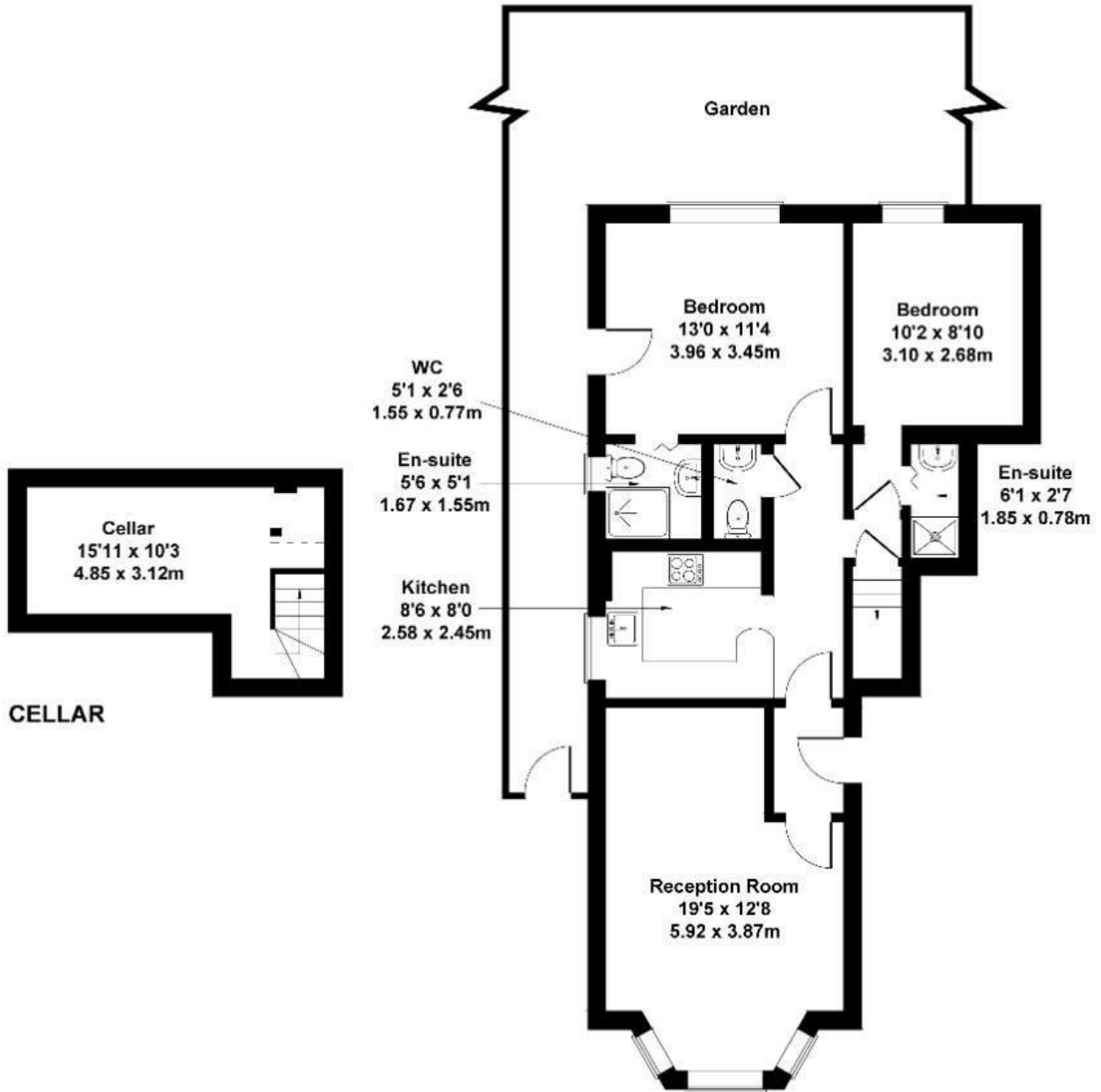
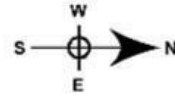
Long Let. this charming 2-bedroom, 2-bathroom garden flat located in the desirable Eaton Rise, W5. This modern property boasts a spacious 850 sq ft of living space, perfect for those seeking a comfortable and stylish home.

- Off street parking
- Additional room for home office or storage
- Private garden
- Excellent central location
- High ceilings
- Available from 14th October

£2,400

Eaton Rise

Approximate Gross Internal Area
850 sq ft - 79 sq m
(Including Cellar)



GROUND FLOOR

Not to Scale. Produced by The Plan Portal 2024
For Illustrative Purposes Only.

Energy Efficiency Rating		
	Current	Potential
<i>Very energy efficient - lower running costs</i>		
(92 plus) A		
(81-91) B		
(69-80) C		
(55-68) D		
(39-54) E		
(21-38) F		
(1-20) G		
<i>Not energy efficient - higher running costs</i>		
England & Wales	EU Directive 2002/91/EC	