



Frithville Gardens, W12

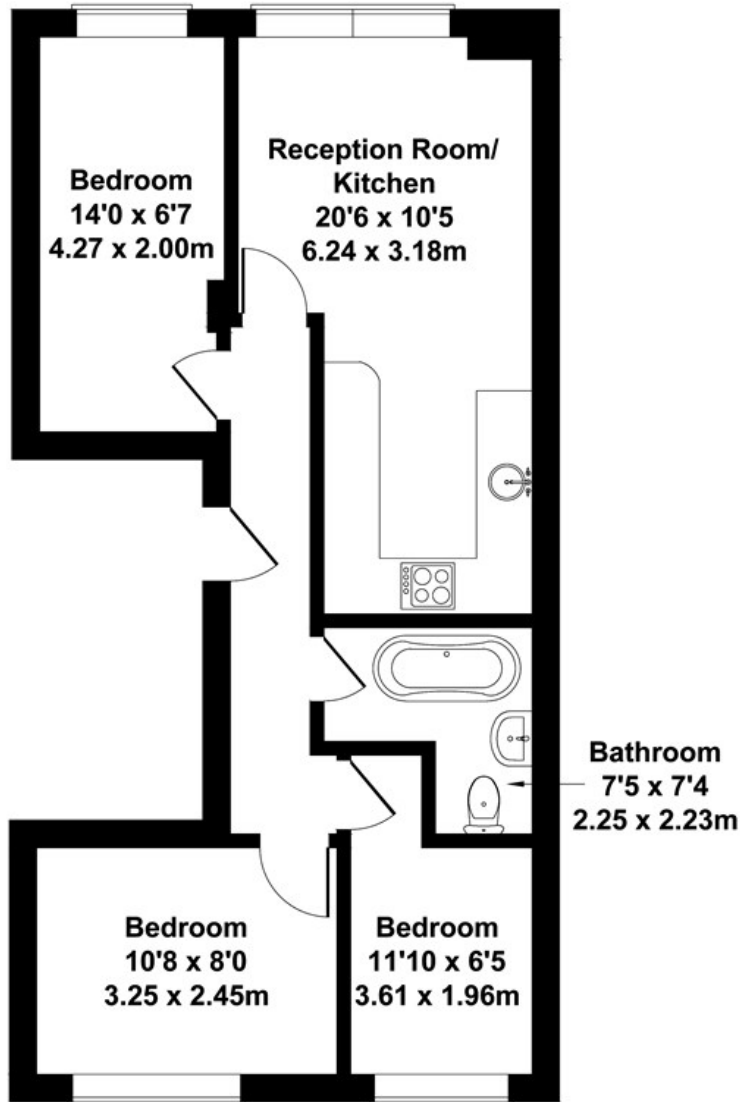
Long let (Sharers welcome). This stunning three bedroom flat boasts a modern interior is situated perfectly for local amenities and transport links.

- Sharers welcome
- Great location
- Three double bedrooms
- Permit parking
- Close to local transport
- Open plan reception

£2,975 PCM

Frithville Gardens

Approximate Gross Internal Area
549 sq ft - 51 sq m



FIRST FLOOR

Not to Scale. Produced by The Plan Portal 2021
For Illustrative Purposes Only.

Energy Efficiency Rating		
	Current	Potential
<i>Very energy efficient - lower running costs</i>		
(92 plus) A		
(81-91) B		
(69-80) C		
(55-68) D		
(39-54) E		
(21-38) F		
(1-20) G		
<i>Not energy efficient - higher running costs</i>		
England & Wales	EU Directive 2002/91/EC	