



## Spooners Mews, W3

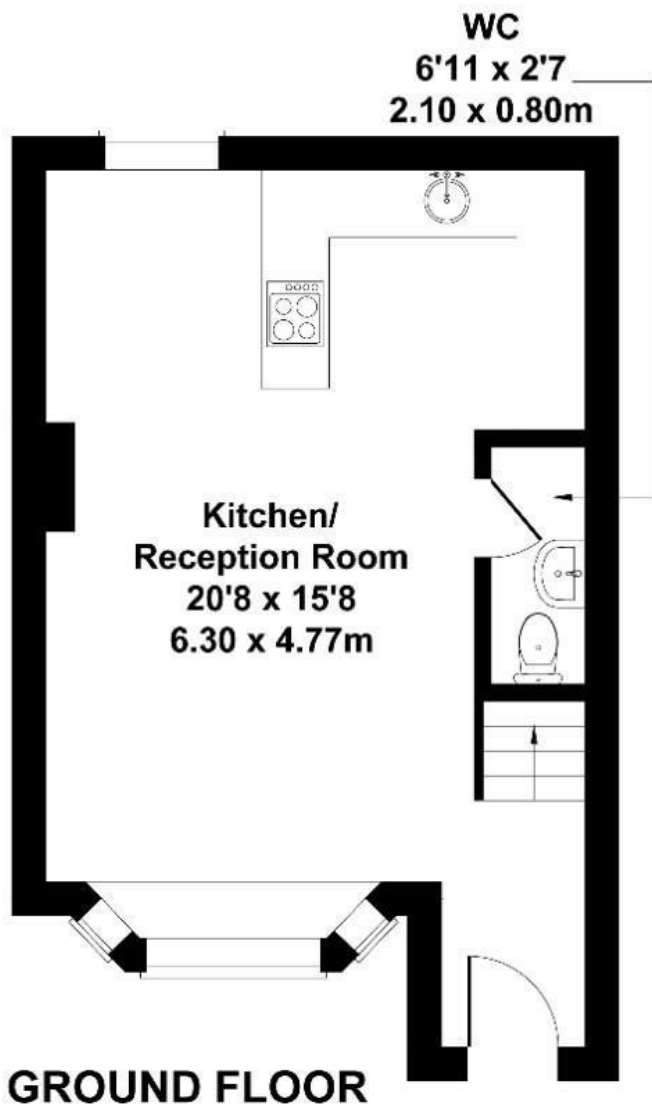
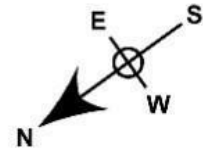
LONG LET: this two-bedroom mews house is situated in a secure, gated development just off Churchfield Road.

- Two bedrooms
- Open plan living
- Off street parking
- Gated development
- Close to amenities
- Close to transport links

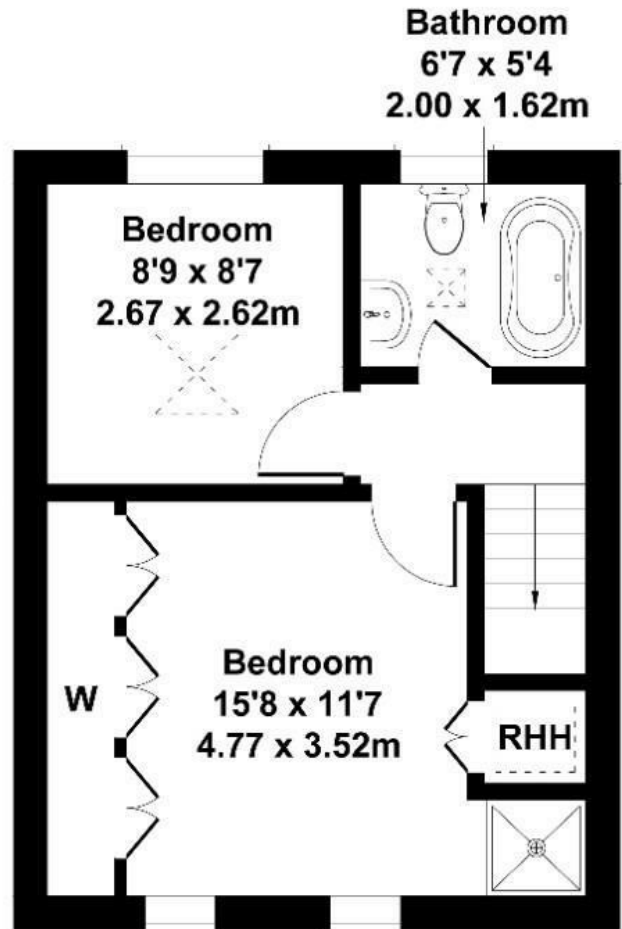
£2,500

# Spooners Mews

Approximate Gross Internal Area  
667 sq ft - 62 sq m



**GROUND FLOOR**



**FIRST FLOOR**

Not to Scale. Produced by The Plan Portal 2021  
For Illustrative Purposes Only.

Energy Efficiency Rating		
	Current	Potential
Very energy efficient - lower running costs		
(92 plus) <b>A</b>		
(81-91) <b>B</b>		
(69-80) <b>C</b>		
(55-68) <b>D</b>	65	
(39-54) <b>E</b>		
(21-38) <b>F</b>		
(1-20) <b>G</b>		
Not energy efficient - higher running costs		
<b>England &amp; Wales</b>	EU Directive 2002/91/EC	