

## Jersey Road, London

A large, one bedroom conversion apartment that has been refurbished to an exceptional standard with private garden that covers the entire ground floor of this handsome Edwardian home on Jersey Road, Hanwell moments from Elthorne Park and the amenities in Hanwell and Northfields.

Jersey Road is a road that adjoins two residential roads on the Hanwell and Northfields border. It is a quiet, residential road that offers resident's only permit parking.

The property itself is over 650 sq ft and offers a flexible layout that can be adapted and modified to suit a new purchaser. There would be scope to extend and remodel the apartment, subject to all planning consents, that could also see the apartment converted to a two bedroom apartment.

Northfields provides ample independent shops and restaurants. Similarly, there is a great wealth of commercial options offered in Hanwell Town centre, and you also have the Elizabeth Line from Hanwell Station. Northfields and Boston Manor stations provide Piccadilly Line to Heathrow and to the centre of London.

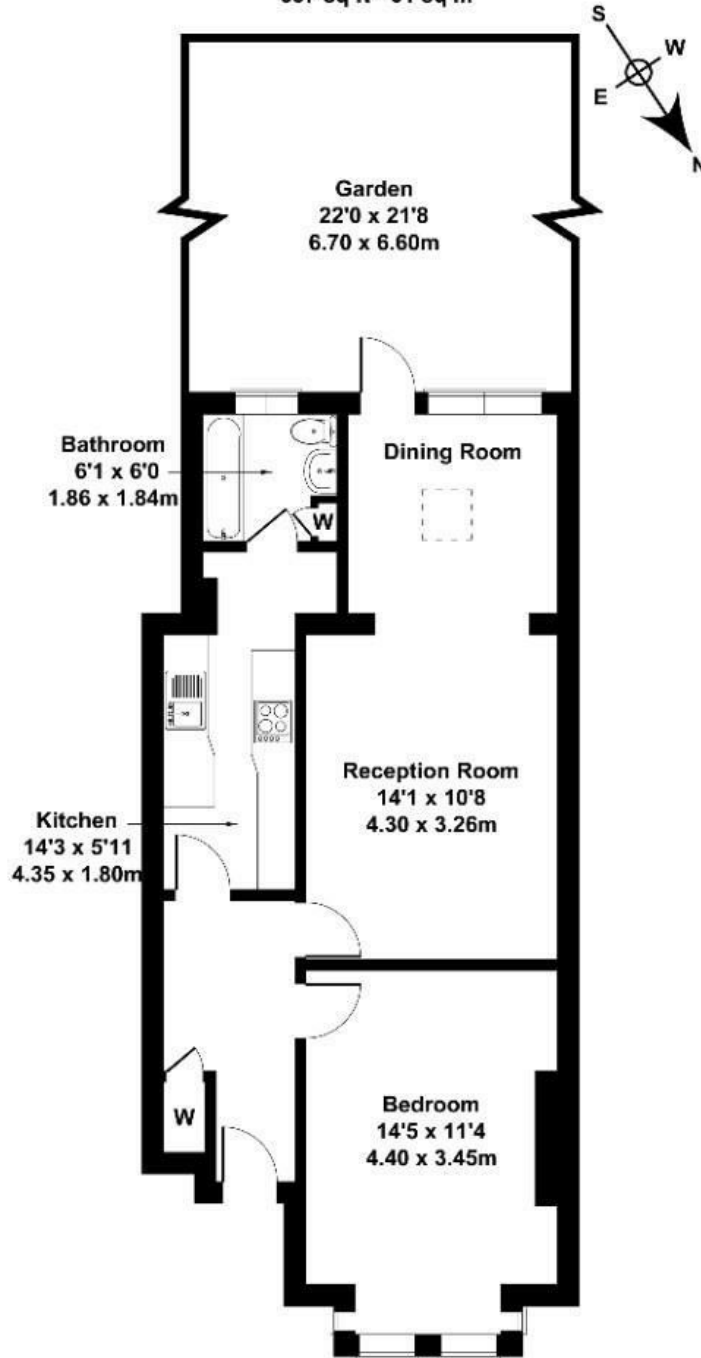
Elthorne Park is in close proximity and this provides tennis courts and nature walks. Walking through the park easy access is afforded to Brent River for leisurely walks. Elthorne Park school is also a short walking distance away.

- Period conversion
- Ground Floor Garden Flat
- Long 990 year lease
- South facing garden
- Open plan living space
- Excellent condition throughout
- Close proximity to Elthorne Park and Boston Manor Station

£450,000

# Jersey Road

Approximate Gross Internal Area  
657 sq ft - 61 sq m



Not to Scale. Produced by The Plan Portal 2024  
For Illustrative Purposes Only.

Energy Efficiency Rating		
	Current	Potential
<i>Very energy efficient - lower running costs</i>		
(92 plus) <b>A</b>		
(81-91) <b>B</b>		
(69-80) <b>C</b>	75	76
(55-68) <b>D</b>		
(39-54) <b>E</b>		
(21-38) <b>F</b>		
(1-20) <b>G</b>		
<i>Not energy efficient - higher running costs</i>		
<b>England &amp; Wales</b>	EU Directive 2002/91/EC	