



Woodfield Road, W5

A large stunning two double bedroom, two bath period conversion making up part of the modern, awe-inspiring 58 Woodfield Rd development which were converted in 2017/2018.

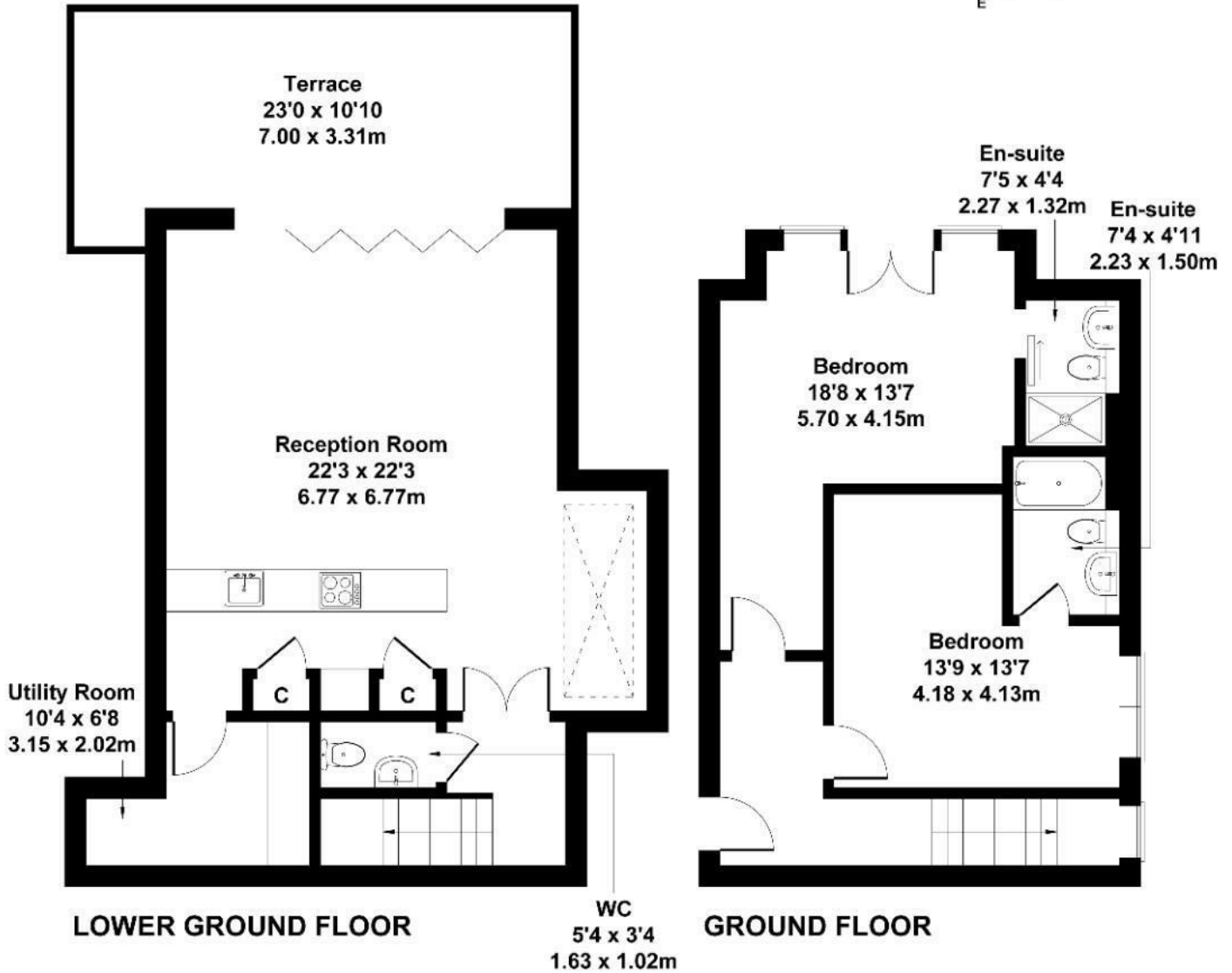
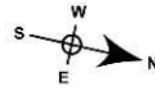
Split over two levels in bespoke condition, the property is made up of two generous double bedrooms, both with en-suites along with a separate WC. The lower level consists of a large open-plan living area (22'3 x 22'3) leading directly to your own private terrace. Further benefits are utility room, low service charges, new lease, storage and communal gardens that accompany the building.

£750,000

- Period conversion
- Two bedrooms
- Two bathrooms and a WC
- Split level
- Close to 1100 sq ft
- Private patio area
- Short distance to Ealing Broadway
- No chain
- Bespoke finish
- Utility room

Woodfield Road

Approximate Gross Internal Area
1098 sq ft - 102 sq m



Not to Scale. Produced by The Plan Portal 2024
For Illustrative Purposes Only.

Energy Efficiency Rating		
	Current	Potential
Very energy efficient - lower running costs		
(92 plus) A		
(81-91) B	81	81
(69-80) C		
(55-68) D		
(39-54) E		
(21-38) F		
(1-20) G		
Not energy efficient - higher running costs		
England & Wales	EU Directive 2002/91/EC	