



Adelaide Grove, W12

A beautifully presented three-bedroom period family home offering close to 1,200 Sq. ft in accommodation situated over three floors. The house is located on a popular residential tree-lined street in the heart of Shepherds Bush.

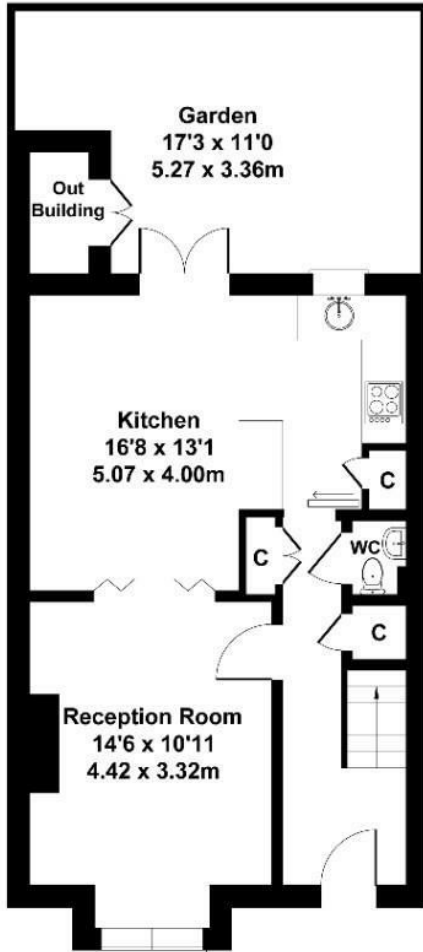
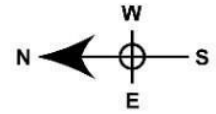
The property has retained many of its original features whilst undergoing some refurbishments. It comprises of three good sized bedrooms, two bathrooms - one en-suite, a guest WC, a utility room and a spacious reception room with double wooden doors leading onto an open-plan kitchen/dining area. The double French doors open onto a secluded private patio.

- Three-bedroom period family house
- Two-bathrooms (one en-suite)
- Open plan kitchen/dining area
- Original features
- Secluded patio
- Popular and residential tree-lined street
- Array of amenities and transport links within easy reach
- Excellent schools nearby

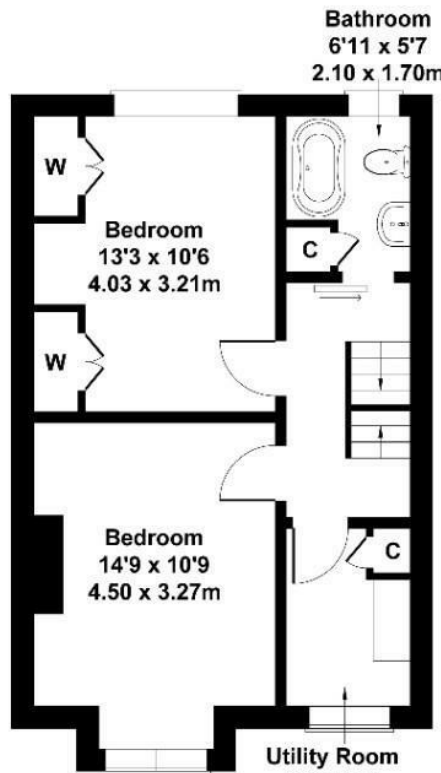
Guide Price £1,000,000

Adelaide Grove

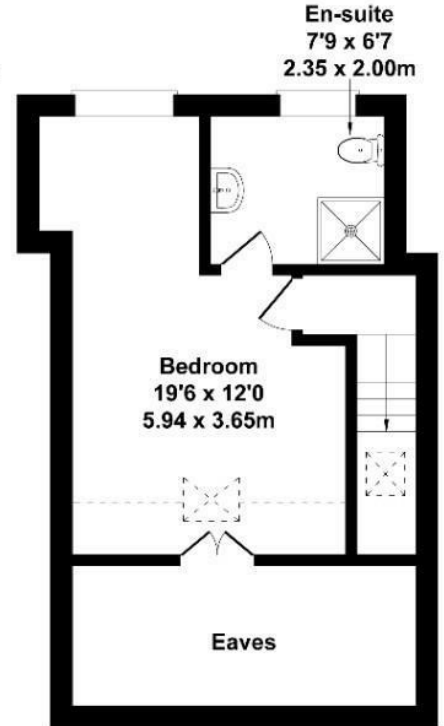
Approximate Gross Internal Area
1195 sq ft - 111 sq m



GROUND FLOOR



FIRST FLOOR



SECOND FLOOR

Not to Scale. Produced by The Plan Portal 2024
For Illustrative Purposes Only.

Energy Efficiency Rating		Current	Potential
<i>Very energy efficient - lower running costs</i>			
92 plus	A		
81-91	B		78
69-80	C		
55-68	D	60	
39-54	E		
21-38	F		
1-20	G		
<i>Not energy efficient - higher running costs</i>			
England & Wales		EU Directive 2002/91/EC	