

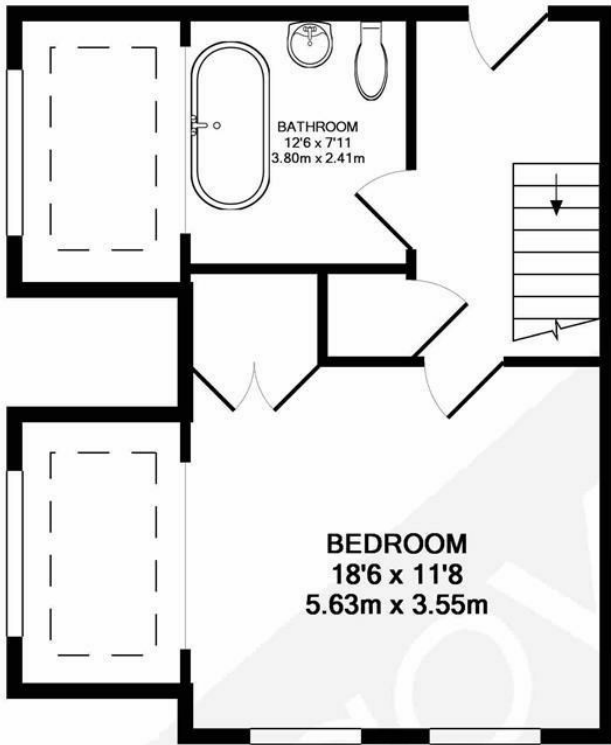


## St. Aidan's Court, W13

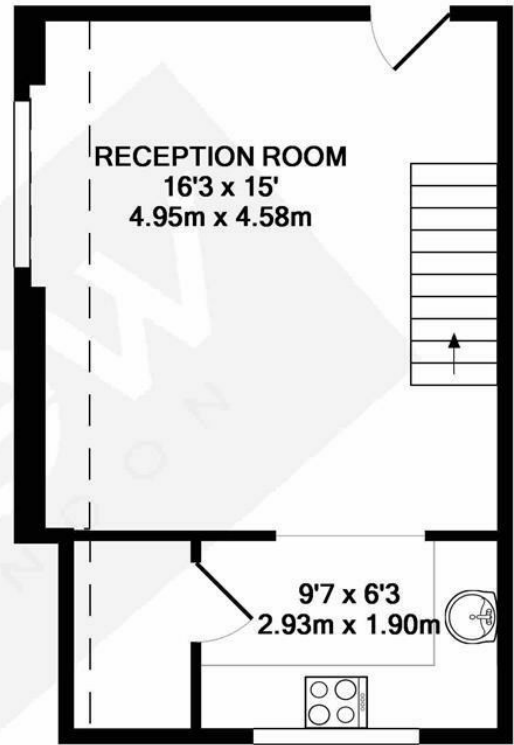
LONG LET. Set in this fantastic church conversion, this large one bedroom flat is arranged over two levels and is well located moments from the ever popular Northfield Avenue.

- Split level flat
- Church conversion
- Popular development
- Parking
- Modern interior
- Early viewings advised

£1,600 PCM



1ST FLOOR  
APPROX. FLOOR  
AREA 386 SQ.FT.  
(35.9 SQ.M.)



2ND FLOOR  
APPROX. FLOOR  
AREA 322 SQ.FT.  
(29.9 SQ.M.)

TOTAL APPROX. FLOOR AREA 708 SQ.FT. (65.8 SQ.M.)

Whilst every attempt has been made to ensure the accuracy of the floor plan contained here, measurements of doors, windows, rooms and any other items are approximate and no responsibility is taken for any error, omission, or mis-statement. This plan is for illustrative purposes only and should be used as such by any prospective purchaser. The services, systems and appliances shown have not been tested and no guarantee as to their operability or efficiency can be given  
Made with Metropix ©2018



Energy Efficiency Rating		Current	Potential
Very energy efficient - lower running costs			
(92 plus) A			
(81-91) B			
(69-80) C			78
(55-68) D		60	
(39-54) E			
(21-38) F			
(1-20) G			
Not energy efficient - higher running costs			
England & Wales		EU Directive 2002/91/EC	