



## Churchfield Road, W3

A very bright and spacious first floor one-bedroom flat occupying a prominent position overlooking Churchfield Road and part of this small development.

The property boasts a south facing separate kitchen and reception room with ample space for dining.

The flat further benefits from a double bedroom with plenty of storage and a stunning brick wall feature, a newly renovated bathroom and a private gated parking space.

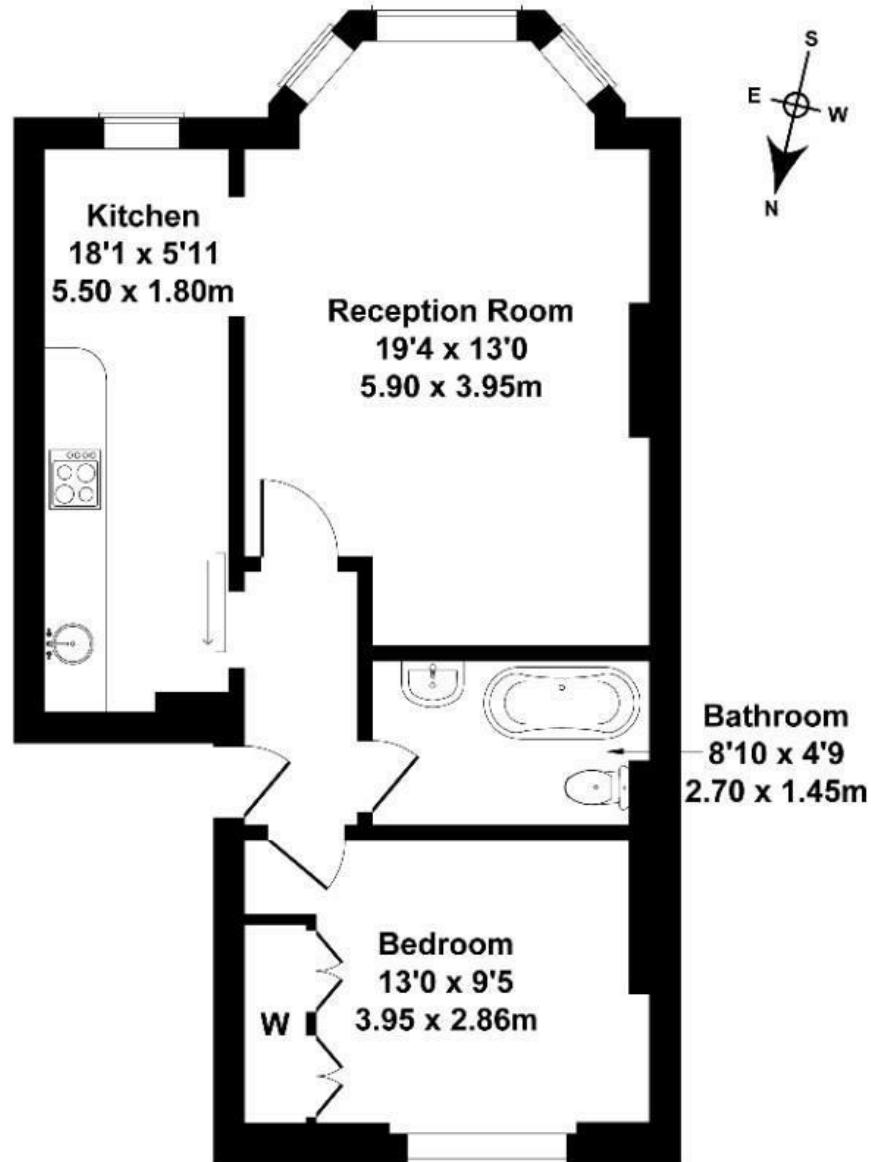
The property is share of freehold with a 988 year lease and low service charges.

- One bedroom
- First floor
- Separate kitchen
- Share of freehold (988 years remaining on the lease)
- Private gated parking
- Chain free
- Close to local amenities
- Close to transports

£399,950

# Churchfield Rd

Approximate Gross Internal Area  
549 sq ft - 51 sq m



## FIRST FLOOR

Not to Scale. Produced by The Plan Portal 2024  
For Illustrative Purposes Only.

Energy Efficiency Rating		Current	Potential
<i>Very energy efficient - lower running costs</i>			
(92 plus) <b>A</b>			
(81-91) <b>B</b>			
(69-80) <b>C</b>		73	80
(55-68) <b>D</b>			
(39-54) <b>E</b>			
(21-38) <b>F</b>			
(1-20) <b>G</b>			
<i>Not energy efficient - higher running costs</i>			
<b>England &amp; Wales</b>	EU Directive 2002/91/EC		