



Churchfield Road, W3

A very bright and spacious first floor one-bedroom flat occupying a prominent position overlooking Churchfield Road and part of this small development.

The property boasts a south facing separate kitchen and reception room with ample space for dining.

The flat further benefits from a double bedroom with plenty of storage and a stunning brick wall feature, a newly renovated bathroom and a private gated parking space.

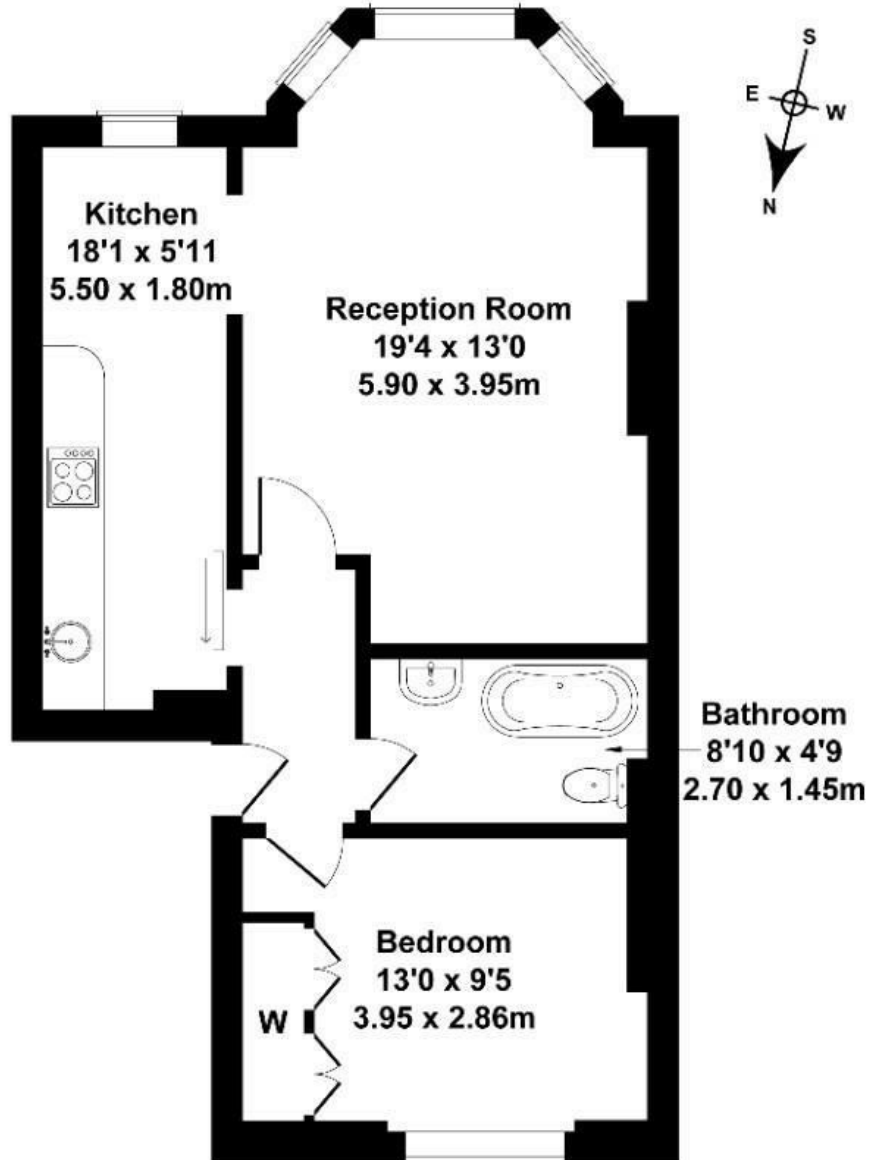
The property is share of freehold with a 988 year lease and low service charges.

- One bedroom
- First floor
- Separate kitchen
- Share of freehold (988 years remaining on the lease)
- Private gated parking
- Chain free
- Close to local amenities
- Close to transports

£399,950

Churchfield Rd

Approximate Gross Internal Area
549 sq ft - 51 sq m



FIRST FLOOR

Not to Scale. Produced by The Plan Portal 2024
For Illustrative Purposes Only.

Energy Efficiency Rating		Current	Potential
Very energy efficient - lower running costs			
(92 plus) A			
(81-91) B			
(69-80) C		73	80
(55-68) D			
(39-54) E			
(21-38) F			
(1-20) G			
Not energy efficient - higher running costs			
England & Wales		EU Directive 2002/91/EC	