



## Underhill Gardens, London

A large modern one bedroom apartment situated on the 6th floor of the popular Bruce Court development which is situated just a short walk from Ealing Broadway centre.

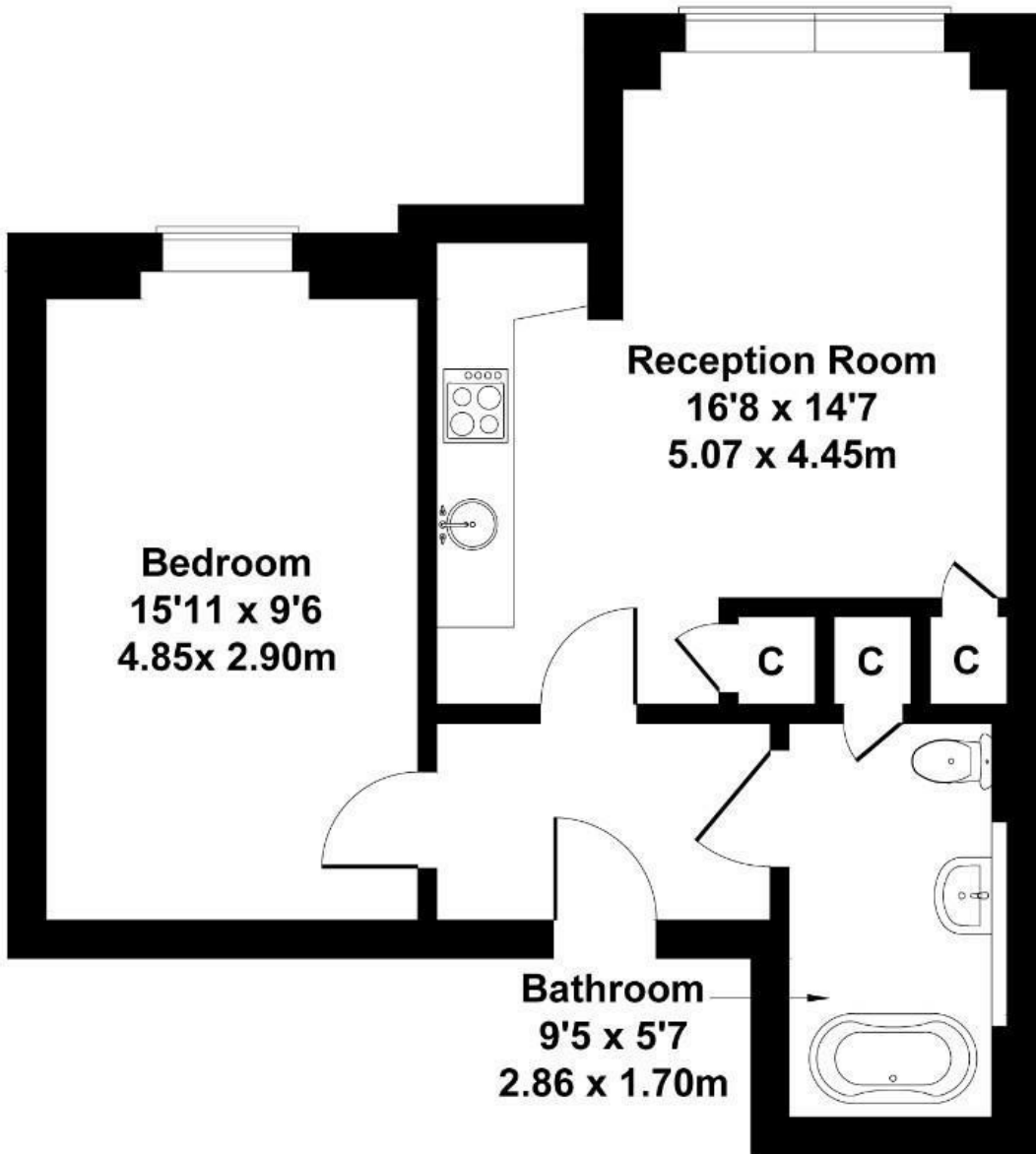
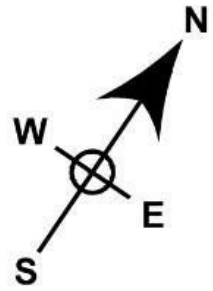
The property comes in excellent condition throughout, measuring close to 500 sq ft with a large fully fitted open plan reception (16'8 x 14'7) family sized bathroom, a large double bedroom and ample storage.

£400,000

- One bedroom apartment
- Sixth Floor
- No chain
- 990 years remain on lease
- Video entry
- Lift
- Built in 2015
- Large communal roof terrace
- Short walk from the centre of Ealing Broadway
- Multiple transport links close by

# Bruce Court

Approximate Gross Internal Area  
495 sq ft - 46 sq m



Not to Scale. Produced by The Plan Portal 2024  
For Illustrative Purposes Only.

Energy Efficiency Rating		
	Current	Potential
<i>Very energy efficient - lower running costs</i>		
(92 plus) <b>A</b>		
(81-91) <b>B</b>		
(69-80) <b>C</b>		
(55-68) <b>D</b>		
(39-54) <b>E</b>		
(21-38) <b>F</b>		
(1-20) <b>G</b>		
<i>Not energy efficient - higher running costs</i>		
<b>England &amp; Wales</b>	EU Directive 2002/91/EC	