



Uxbridge Road, W3

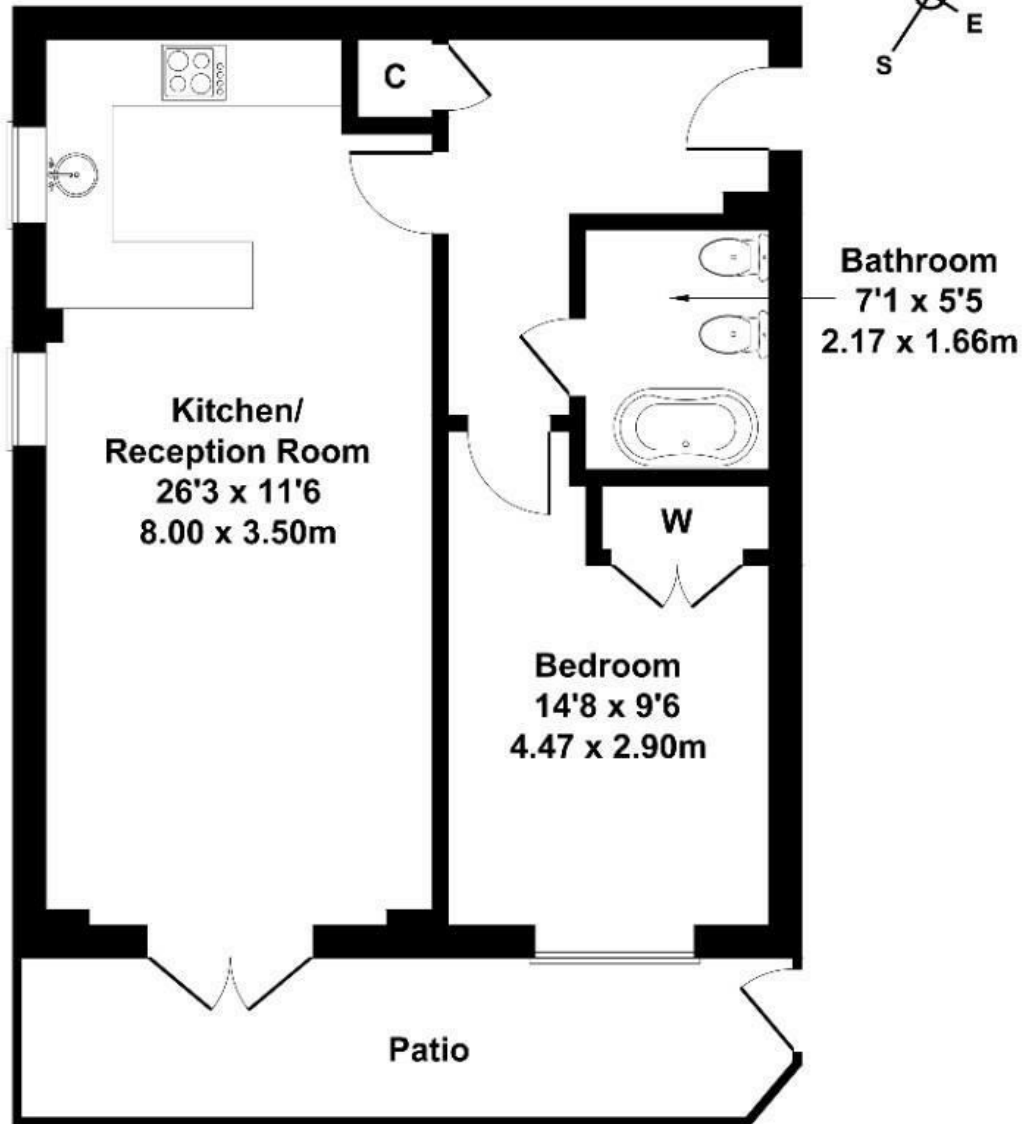
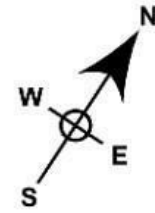
A spacious one-bedroom ground floor apartment at just over 600 sq ft it offers well-appointed rooms, a separate kitchen, a south-facing private patio as well as direct access to well-maintained communal gardens.

- Large one bedroom over 600sq ft
- Ground floor apartment
- Spacious reception room
- Purpose built
- Great transport links
- Wide range of local amenities
- Long lease - 132 Years
- South facing private patio
- Bike storage
- Communal south facing gardens

£365,000

Uxbridge Road

Approximate Gross Internal Area
603 sq ft - 56 sq m



GROUND FLOOR

Not to Scale. Produced by The Plan Portal 2024
For Illustrative Purposes Only.

Energy Efficiency Rating		
	Current	Potential
<i>Very energy efficient - lower running costs</i>		
(92 plus) A		
(81-91) B		
(69-80) C	73	81
(55-68) D		
(39-54) E		
(21-38) F		
(1-20) G		
<i>Not energy efficient - higher running costs</i>		
England & Wales	EU Directive 2002/91/EC	