



## Windsor Road, London

Centrally located in the heart of Ealing Broadway is this large top floor one bedroom conversion apartment that spans the entire width of an imposing period residence and is presented in excellent decorative order.

Measuring approx. 570 square foot, the property provides ample size for a buyer(s) looking for a good amount of space in a central Ealing location where you can enjoy the range and depth of the town centre on your doorstep.

- Large one bedroom
- Top floor flat
- No chain
- New lease 125 yrs
- Central Ealing location
- In excellent order throughout
- 570 Sq Ft
- Close to transport links

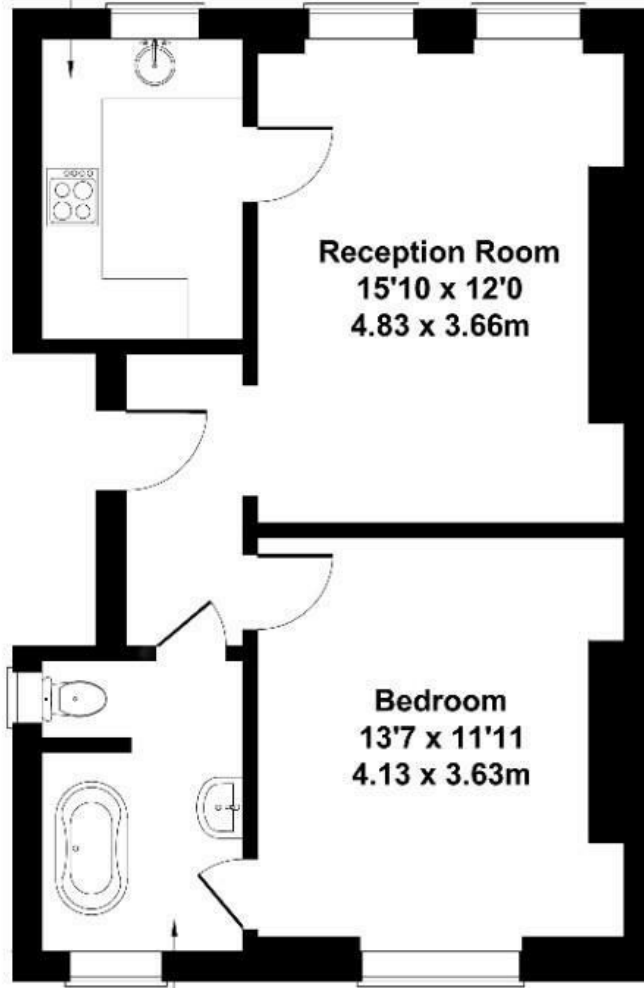
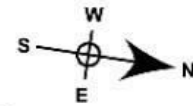
£450,000

# Windsor Road

Approximate Gross Internal Area

534 sq ft - 49.6 sq m

**Kitchen**  
9'10 x 6'7  
3.00 x 2.00m



**Reception Room**  
15'10 x 12'0  
4.83 x 3.66m

**Bedroom**  
13'7 x 11'11  
4.13 x 3.63m

**Bathroom**  
9'6 x 6'8  
2.90 x 2.04m

## SECOND FLOOR

Not to Scale. Produced by The Plan Portal 2023  
For Illustrative Purposes Only.

Energy Efficiency Rating		Current	Potential
<i>Very energy efficient - lower running costs</i>			
(92 plus) <b>A</b>			
(81-91) <b>B</b>			
(69-80) <b>C</b>			76
(55-68) <b>D</b>	56		
(39-54) <b>E</b>			
(21-38) <b>F</b>			
(1-20) <b>G</b>			
<i>Not energy efficient - higher running costs</i>			
<b>England &amp; Wales</b>	EU Directive 2002/91/EC		