



Sandall Close, London

Set on the ground floor of these popular Sandall Close double-fronted maisonettes with large frontage is this two-bedroom offering with garden which has been styled and modernised to excellent standard.

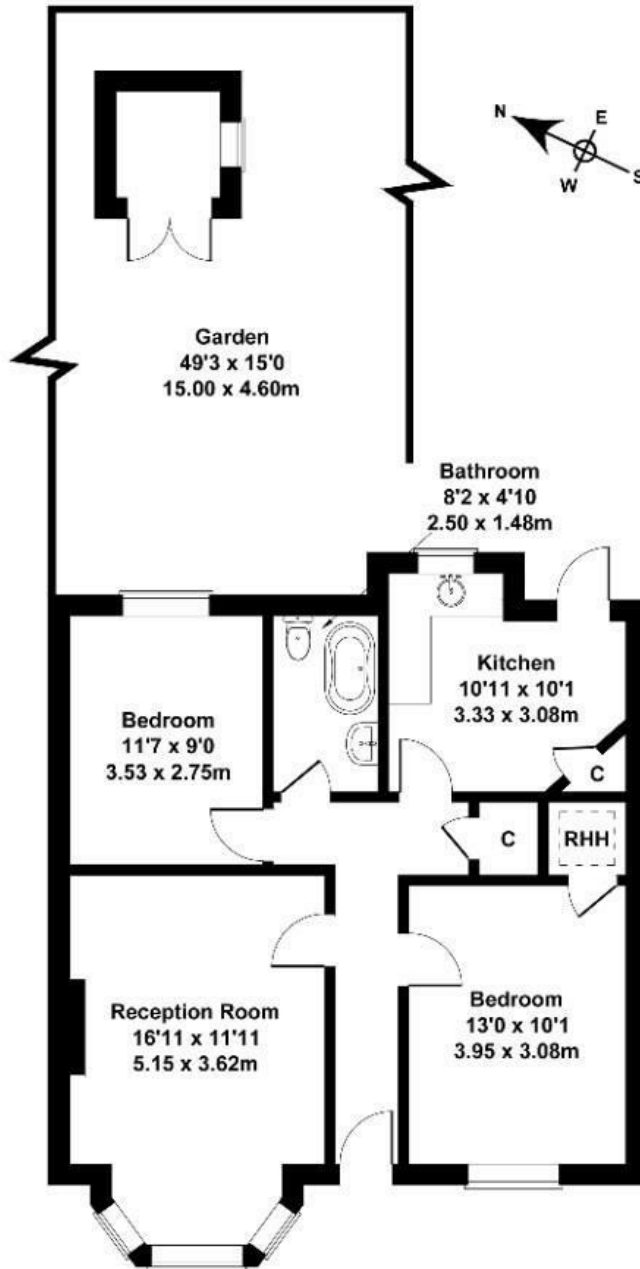
The property has been refined and refurbished to a great standard and offers plentiful living and entertaining space. The rear garden provides a perfect backdrop for entertaining and family life.

- Garden masionette
- Two double bedrooms
- Long lease 119 years
- No chain
- Excellent condition throughout
- 50ft well groomed garden
- Quiet Cul-de-Sac
- Close to transport links

£500,000

Sandal Close

Approximate Gross Internal Area
721 sq ft - 67 sq m



GROUND FLOOR

Not to Scale. Produced by The Plan Portal 2024
For Illustrative Purposes Only.

Energy Efficiency Rating		Current	Potential
<i>Very energy efficient - lower running costs</i>			
(92 plus) A			
(81-91) B			
(69-80) C			
(55-68) D			
(39-54) E			
(21-38) F			
(1-20) G			
<i>Not energy efficient - higher running costs</i>			
England & Wales	EU Directive 2002/91/EC		