



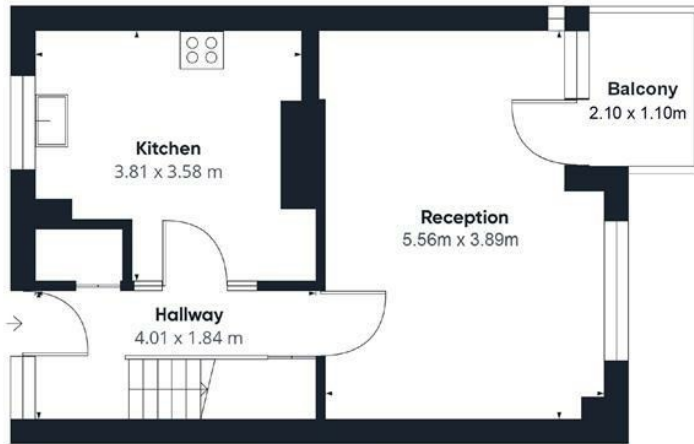
Fletcher Road, London

- Three-bedroom apartment
- Split over two floors
- Private balcony
- Communal gardens
- Purpose build
- Short walk from Chiswick High Road
- Near transport links (London Overground and District Line) and amenities

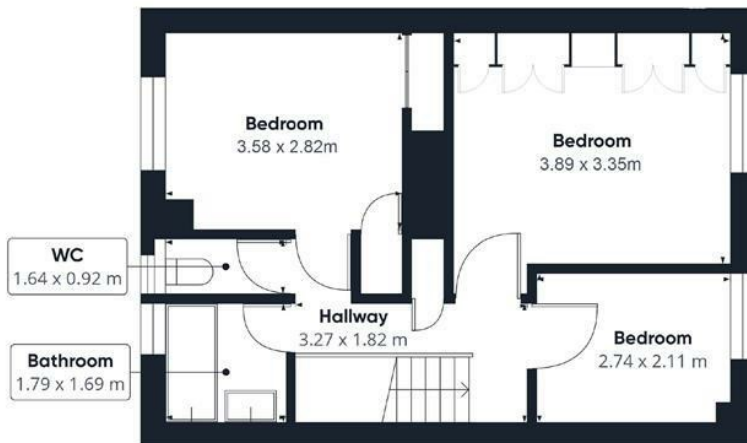
£535,000



**Ground Floor**



**Second Floor**



**Third Floor**



Approximate total area<sup>(1)</sup>  
89.56 m<sup>2</sup>

(1) Excluding balconies and terraces

While every attempt has been made to ensure accuracy, all measurements are approximate, not to scale. This floor plan is for illustrative purposes only.

GIRAFFE360

Energy Efficiency Rating		Current	Potential
Very energy efficient - lower running costs			
(92 plus) <b>A</b>			
(81-91) <b>B</b>			
(69-80) <b>C</b>			
(55-68) <b>D</b>		66	72
(39-54) <b>E</b>			
(21-38) <b>F</b>			
(1-20) <b>G</b>			
Not energy efficient - higher running costs			
<b>England &amp; Wales</b>	EU Directive 2002/91/EC		