

## Enfield Road, W3

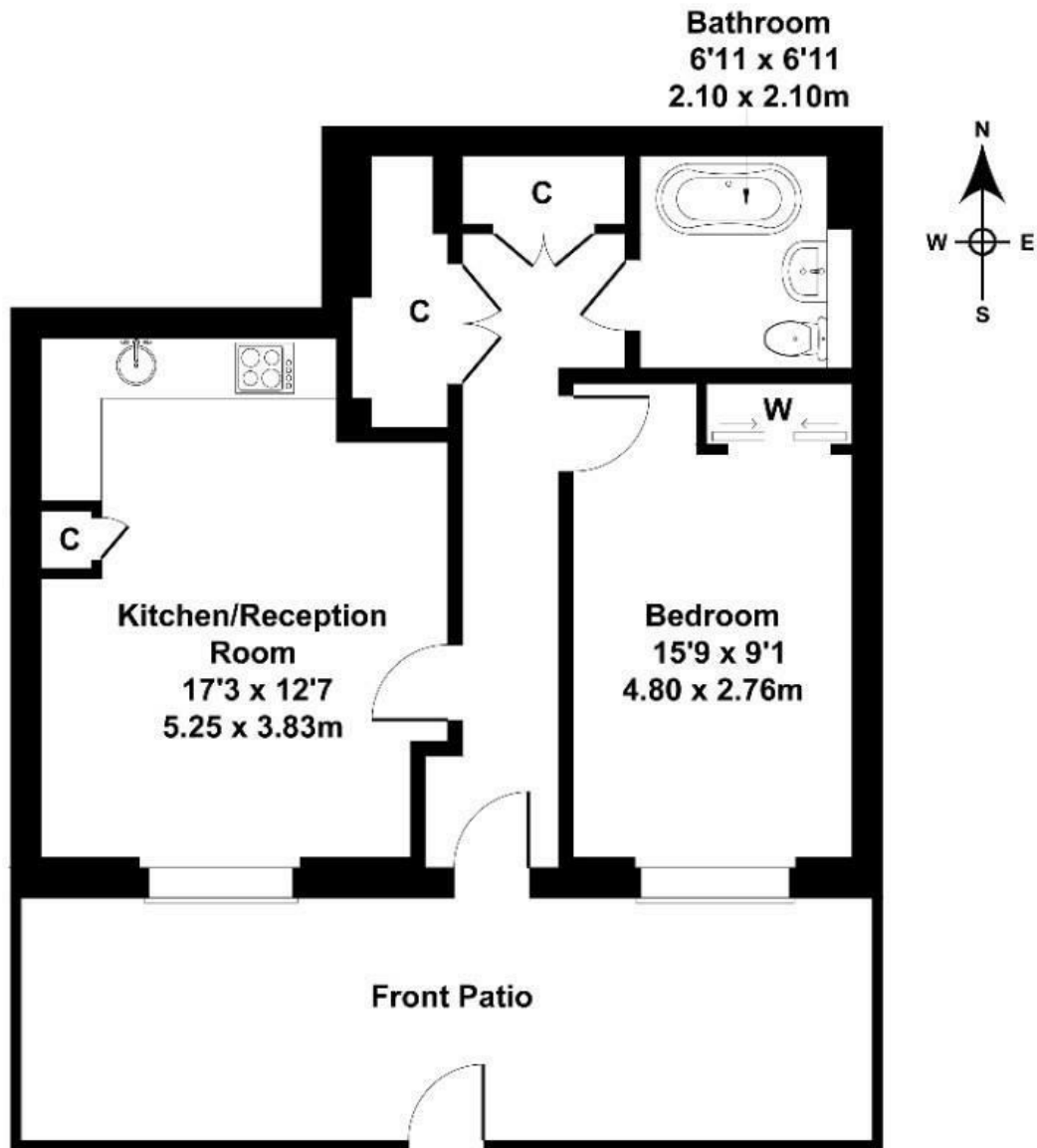
A modern and immaculate one-bedroom maisonette offering contemporary living. Set on the ground floor of this impressive purpose-built development with a private patio.

- Maisonette
- Purpose built
- One bedroom
- Immaculate condition
- Private patio
- 121 Years lease remaining
- South Acton & Acton Town stations close by
- Chain free

£375,000

# Enfield Road

Approximate Gross Internal Area  
549 sq ft - 51 sq m



## GROUND FLOOR

Not to Scale. Produced by The Plan Portal 2024  
For Illustrative Purposes Only.

Energy Efficiency Rating		
	Current	Potential
<i>Very energy efficient - lower running costs</i>		
(92 plus) <b>A</b>		
(81-91) <b>B</b>	80	80
(69-80) <b>C</b>		
(55-68) <b>D</b>		
(39-54) <b>E</b>		
(21-38) <b>F</b>		
(1-20) <b>G</b>		
<i>Not energy efficient - higher running costs</i>		
<b>England &amp; Wales</b>	EU Directive 2002/91/EC 