



## Saxon Drive, W3

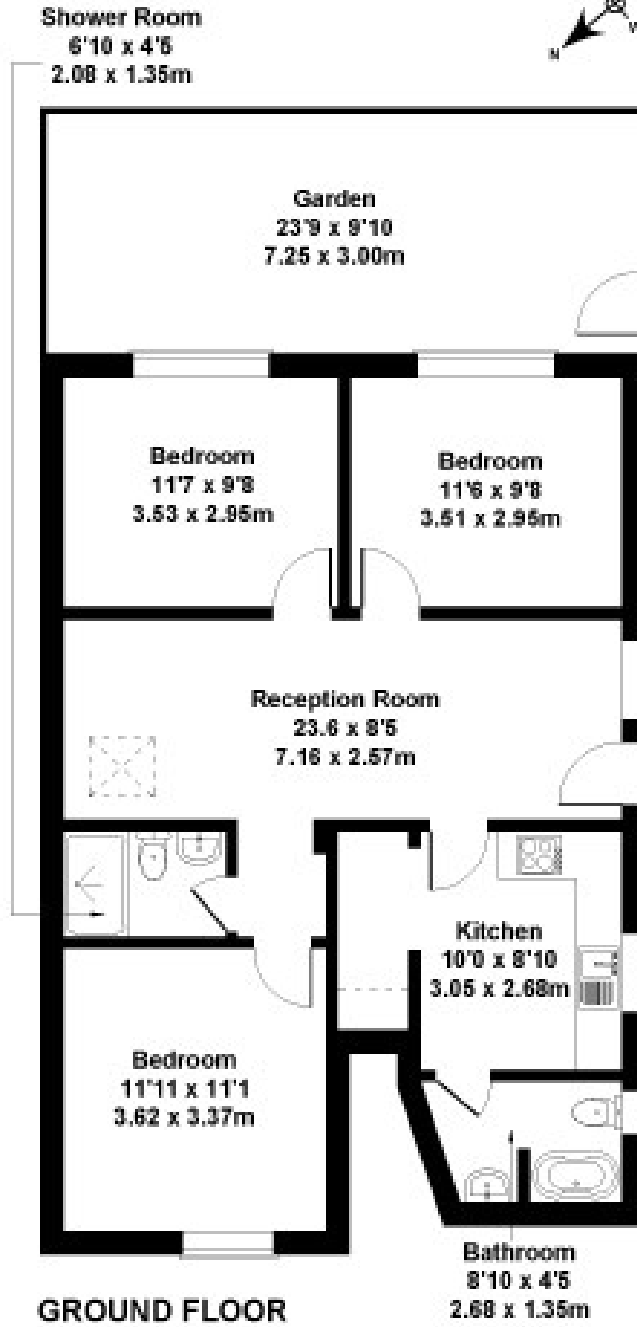
LONG LET. This beautifully presented three bedroom garden flat is situated in a leafy residential street close to local transport and amenities.

- MODERN INTERIOR
- THREE DOUBLE BEDROOMS
- PRIVATE GARDEN
- SEPARATE KITCHEN
- CLOSE TO TRANSPORT

£2,650 PCM

# Saxon Drive

Approximate Gross Internal Area  
797 sq ft - 74 sq m



Not to Scale. Produced by The Plan Portal 2022  
For Illustrative Purposes Only.

Energy Efficiency Rating		
	Current	Potential
<i>Very energy efficient - lower running costs</i>		
(92 plus) <b>A</b>		
(81-91) <b>B</b>		
(69-80) <b>C</b>		
(55-68) <b>D</b>		
(39-54) <b>E</b>		
(21-38) <b>F</b>		
(1-20) <b>G</b>		
<i>Not energy efficient - higher running costs</i>		
<b>England &amp; Wales</b>	EU Directive 2002/91/EC	