



3, 50 The Grove, London, W5 5LG

A stunning one bedroom period flat located moments from Ealing Broadway centre.

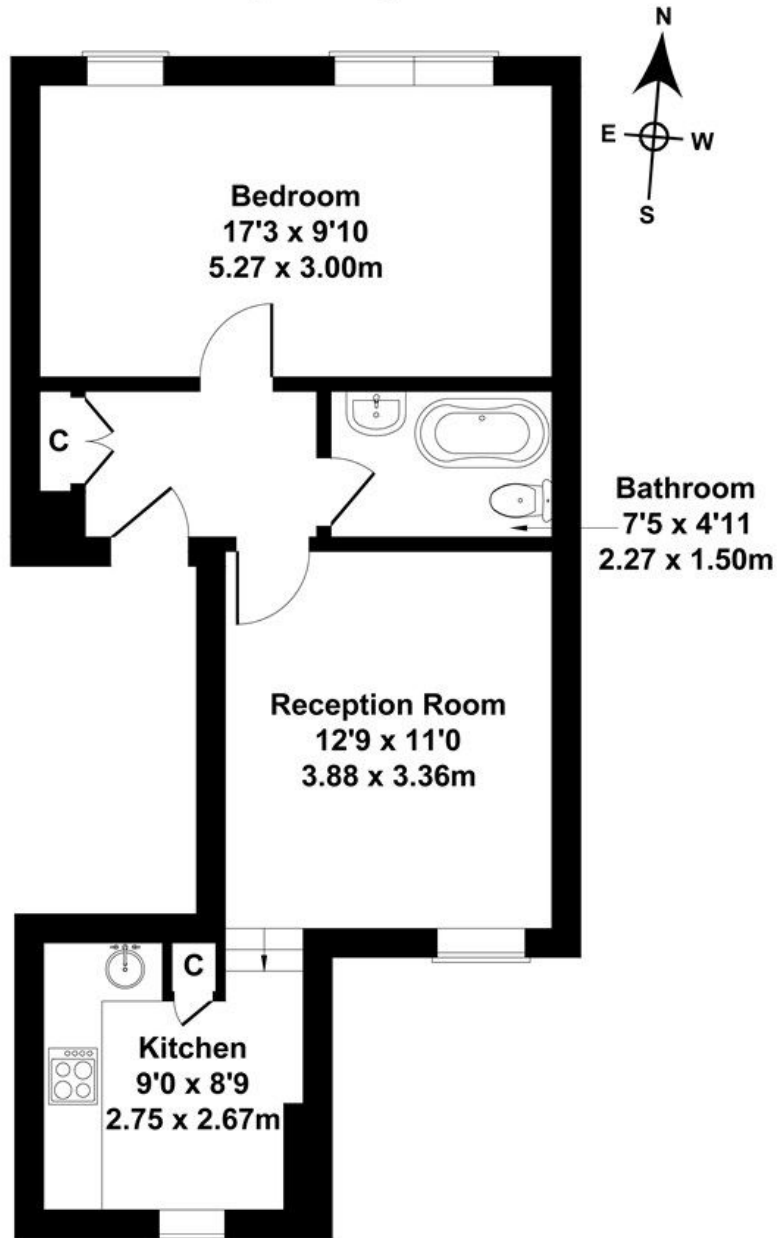
The property is situated on the first floor and comprises of a large reception, separate kitchen, large double bedroom and stylish family bathroom. The property has high ceiling, abundance of light and comes with no onward chain.

- Period conversion
- One bedroom
- First floor
- No chain
- New Lease
- Central Ealing location
- Popular residential street
- Close to Ealing Broadway
- Separate kitchen
- Recently refurbished

£465,000

The Grove

Approximate Gross Internal Area
495 sq ft - 46 sq m



FIRST FLOOR

Not to Scale. Produced by The Plan Portal 2023
For Illustrative Purposes Only.

Energy Efficiency Rating		Current	Potential
<i>Very energy efficient - lower running costs</i>			
(92 plus) A			
(81-91) B			
(69-80) C		75	82
(55-68) D			
(39-54) E			
(21-38) F			
(1-20) G			
<i>Not energy efficient - higher running costs</i>			
England & Wales		EU Directive 2002/91/EC	