



GFF, 43A Adelaide Road, London, W13 9ED

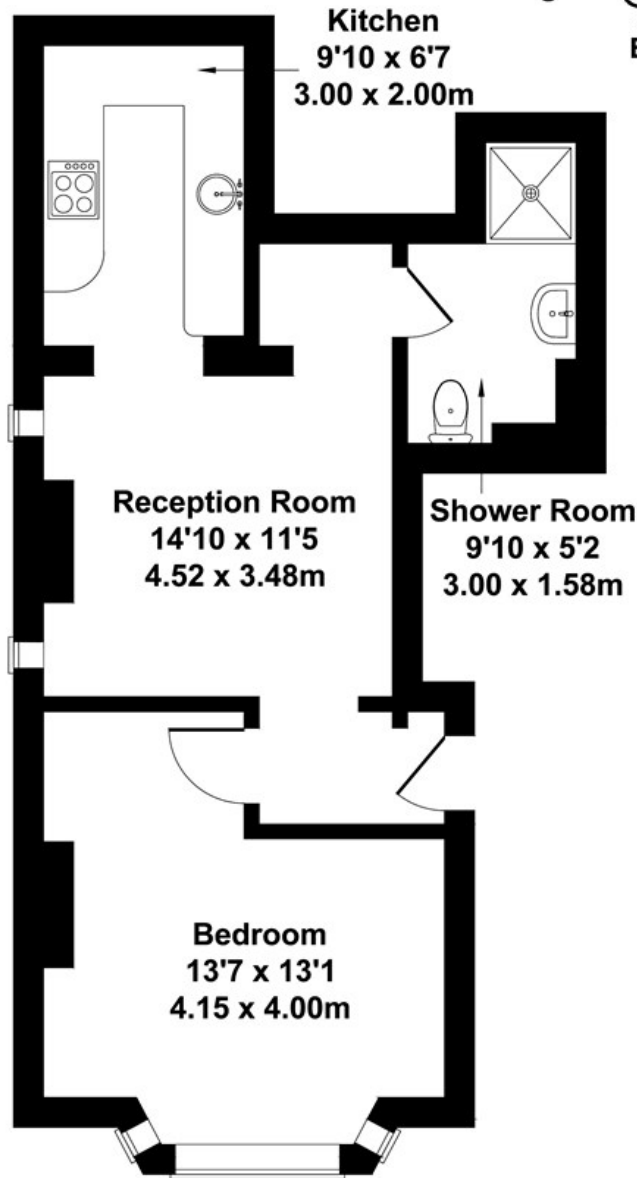
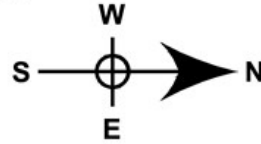
A newly refurbished one-bedroom conversion apartment in a period building on a prime residential road in close proximity to Northfields station and easy walking distance to West Ealing.

- Period conversion
- Large one bedroom
- Ground floor
- Spacious accomodation
- Close to Transport links
- Ideal investment or starter home
- High ceilings
- No chain

£289,950

GFF Adelaide Road

Approximate Gross Internal Area
441 sq ft - 41 sq m



GROUND FLOOR

Not to Scale. Produced by The Plan Portal 2021
For Illustrative Purposes Only.

Energy Efficiency Rating		Current	Potential
Very energy efficient - lower running costs			
(92 plus) A			
(81-91) B			
(69-80) C		70	78
(55-68) D			
(39-54) E			
(21-38) F			
(1-20) G			
Not energy efficient - higher running costs			
England & Wales	EU Directive 2002/91/EC		